

16

1610 05

Power supply connectors



Power supply chassis socket, straight version, with solder eyes, for snap-in front side mounting

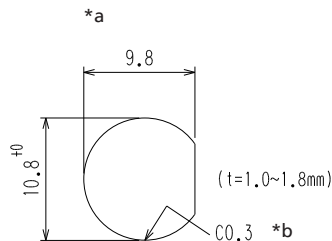
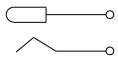
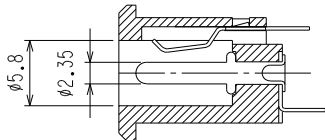
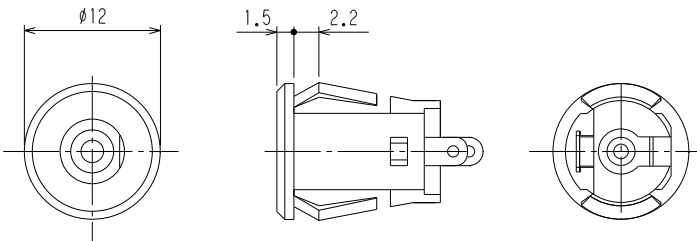
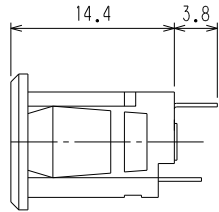
---

State: Obsolete

---

16

1610 05



\*a port in mounting plate  
\*b for metal plate

#### Environmental conditions

Temperature range -20 °C/+70 °C

#### Materials

Insulating body PA GF, HB according to UL94  
Contact spring CuZn/CuSn, nickel-plated

#### Mechanical data

Diameter opening 5.8 mm  
Diameter center pin 2.35 mm  
Mating cycles  $\geq 3000$   
Insertion force 4–30 N<sup>1</sup>  
Withdrawal force 4–30 N<sup>1</sup>

<sup>1</sup> measured with a gauge plug

#### Electrical data (at T<sub>amb</sub> 20 °C)

Contact resistance  $\leq 30 \text{ m}\Omega$   
Rated current 2 A  
Rated voltage 24 V DC  
Rated impulse voltage 500 V/60 s  
Insulation resistance  $\geq 100 \text{ M}\Omega$

#### Associated products

Counterparts  
 ☞ 1633 04      ☞ 1634 02      ☞ NES/J 25  
 ☞ NES/J 250      ☞ XNES/J 250

16

1610 05

Designation	Pole Number	PU (Pieces)	MDQ (Pieces)
1610 05	2	250	500

**Packaging:**

in bulk, in a cardboard box or a plastic bag