

16

1637 04

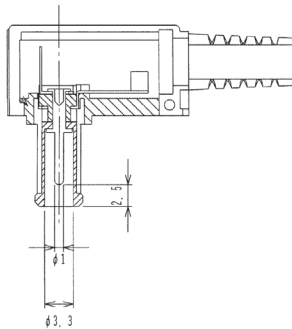
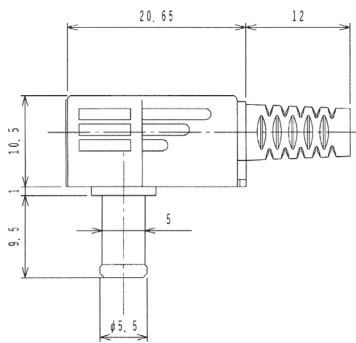
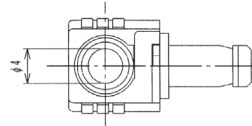
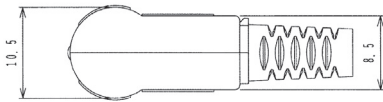
## Power supply connectors



Power supply plug acc. to JEITA RC-5320A JSBP4, angular version, with solder eyes and bend protection

16

1637 04



#### Environmental conditions

Temperature range -20 °C/+70 °C

#### Materials

Insulating body	PC
Contact	CuZn, nickel-plated
Insulation	POM
Housing	PP/POM
Bend protection sleeve	PVC

#### Mechanical data

Outer diameter	5.5 mm
Inner diameter	3.3 mm
Diameter center pin	1.0 mm

#### Connectable conductors for solder area

Cable diameter 4 mm

#### Electrical data (at T<sub>amb</sub> 20 °C)

Rated current	2 A
Rated voltage	13.5 V DC
Rated impulse voltage	500 V/60 s
Insulation resistance	≥ 100 MΩ

16

1637 04

Designation	Pole Number	PU (Pieces)	MDQ (Pieces)
1637 04	2	250	500